


 Accommodation Placement Fee
for all options: \$280


 Payment is due at least 2 weeks
prior to student arrival

 Airport Pick Up Service:
\$165

HOMESTAY

Living with a friendly Australian family is the most popular option. On average, homestay families live about 40 minutes by public transport from the school. Homestay accommodation includes breakfast & dinner from Monday to Friday, plus lunch on weekends.


Room type 2018

Standard Single:	 \$320/week
Twin Share: (students arriving together)	\$275/week
Standard Single: with Guardianship	\$400/week
Extra Night / Standard Single:	\$60/night




RESIDENTIAL CozyStay / Student Residence Premium

www.cozzystay.com.au


 **Main features:** High end, fully furnished houses and apartments with planned kitchen, timber floors and built in wardrobes. Laundry facilities (coin operated machines). Free high speed WiFi. Bed linen provided. Utility expenses included.

 **Type:** Shared Apartments and Houses

 **Extras:** Compulsory Airport Transfer (\$165)

 **Location:** Eastern Suburbs
(Kingsford / Randwick) and Lower North
Shore (North Sydney)


Weekly rates 2018

Standard Single:	 \$385/week
Twin Share or Double Room:	\$240/week
Security deposit (bond):	\$350 to be paid on the day of arrival.



Terms & Conditions for all options: Prices are subject to provider changes / Minimum length of stay: 4 weeks for residential accommodation and 2 weeks for homestay / Payment is due at least 2 weeks prior to student arrival / Placement confirmation sent after receipt of full payment and confirmation of arrival flight details / Cancellation fees apply and are subject to provider policies


 Accommodation Placement Fee
for all options: \$280

 Payment is due at least 2 weeks
prior to student arrival


 Airport Pick Up Service:
\$165

Accommodation 4 Students

www.a4s.com.au

 **Main features:** Fully furnished apartments in modern residential complex, with swimming pool and gym for the Sydney City locations. Laundry facilities. Free high speed WiFi. Bed linen provided. Utility expenses included.

 **Type:** Shared Apartments

 **Location:** Sydney City (Pyrmont, Ultimo, CBD) or Suburbs (Artarmon, Rockdale, Kogarah, Lane Cove, Ashfield)

Weekly rates 2018

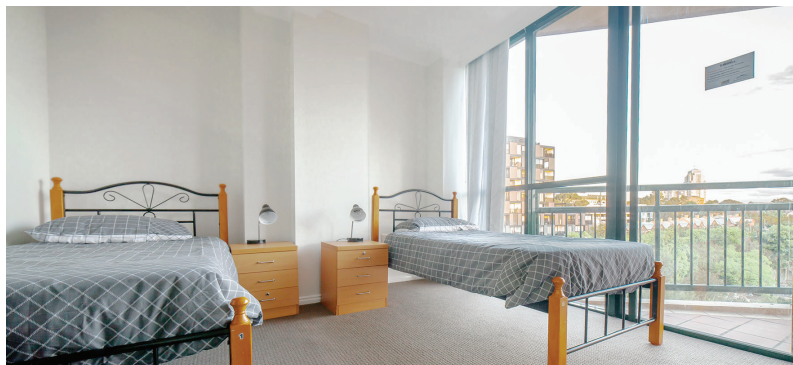


Sydney City / Twin Share: \$270/week

Suburbs / Standard Single: \$270/week


Suburbs / Twin Share: \$215/week


Security deposit (bond): \$350 to be paid on the day of arrival.



Study House

www.studyhouse.com

 **Main features:** Recently renovated, furnished building with 4 levels and an outdoor terrace; each house identically appointed with polished timber floors, modern kitchen and bathroom and a large common area. Laundry facilities (coin operated machines). Free WiFi. Bed linen provided. Utility expenses included.

 **Type:** Shared House

 **Location:** Sydney City (Ultimo)

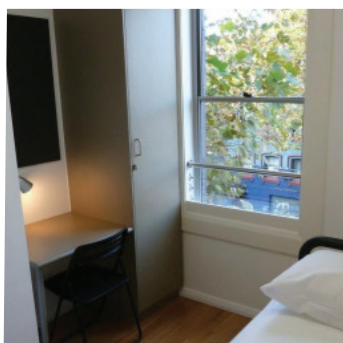
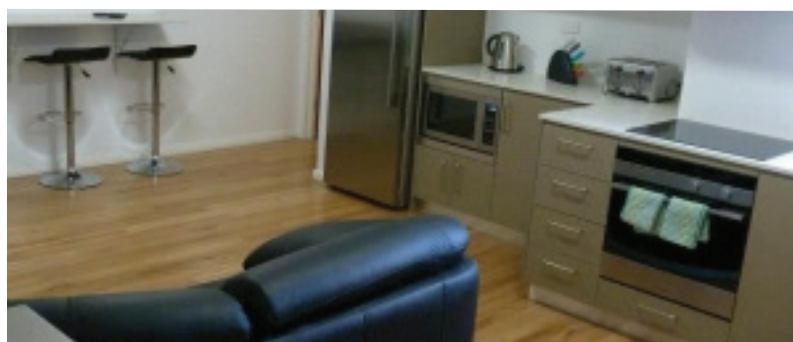
Weekly rates 2018



Standard Single: \$350/week


Twin Share: \$300/week

Security deposit (bond): \$300 to be paid on the day of arrival.



Terms & Conditions for all options: Prices are subject to provider changes / Minimum length of stay: 4 weeks for residential accommodation and 2 weeks for homestay / **Payment is due at least 2 weeks prior to student arrival** / Placement confirmation sent after receipt of full payment and confirmation of arrival flight details / Cancellation fees apply after and are subject to provider policies


 Accommodation Placement Fee
for all options: \$280


 Payment is due at least 2 weeks
prior to student arrival

 Airport Pick Up Service:
\$165

Link 2

www.link2.com.au

 **Main features:** Recently renovated, modern building with 2 separate houses; each house identically appointed with modern appliances, kitchen and bathrooms, common area, air conditioned bedrooms. Laundry facilities (coin operated machines). Free WiFi. Bed linen provided. Utility expenses included.

 **Type:** Shared House

 **Location:** Sydney City (Haymarket / opposite Central Station)

Weekly rates 2018

Standard Single:

 \$375/week


Twin Share:


\$295/week



Jack's Place

www.furnishedproperty.com.au

 **Main features:** Student residence with 40 single rooms, fully equipped kitchens, lounge areas with cable TV, separate male and female shared bathrooms, communal study room, roof-top terrace with outdoor furniture and BBQ. Free cable internet in every room. Free WiFi in common areas. Laundry facilities (coin operated machines). Bed linen provided.

 **Type:** Student Residence

 **Location:** Sydney City (Elizabeth Bay)

Weekly rates 2018


Standard Single:

 \$400/week



Terms & Conditions for all options: Prices are subject to provider changes / Minimum length of stay: 4 weeks for residential accommodation and 2 weeks for homestay / Payment is due at least 2 weeks prior to student arrival / Placement confirmation sent after receipt of full payment and confirmation of arrival flight details / Cancellation fees apply and are subject to provider policies


 Accommodation Placement Fee
for all options: \$280

 Payment is due at least 2 weeks
prior to student arrival


 Airport Pick Up Service:
\$165

Yurong House

www.furnishedproperty.com.au

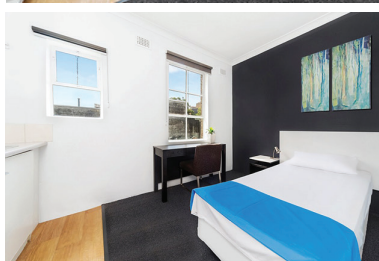
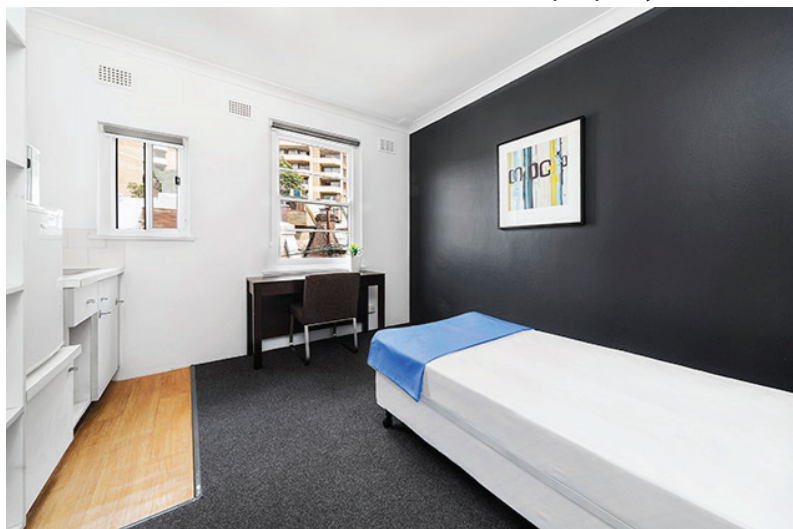
 **Main features:** Student residence with 30 beautiful, one bedroom studio units all equipped with modern furniture and kitchenette, shared common areas with TV, shared bathroom and a large shared kitchen. Up to 10GB/month WiFi usage per person. Laundry facilities (coin operated machines). Bed linen provided. Utility expenses included.

 **Type:** Student Residence

 **Location:** Sydney City (Darlinghurst)


Weekly rates 2018

Studio:  \$450/week




Chalmers Lodge

www.furnishedproperty.com.au

 **Main features:** Student residence with 19 studio units all equipped with modern furniture and kitchenette, shared common areas with TV, shared bathroom, large shared kitchen and communal courtyard. Laundry facilities (coin operated machines). Bed linen provided. Utility expenses included.

 **Type:** Student Residence

 **Location:** Sydney City (Surry Hills)

Weekly rates 2018

Studio:  \$430/week

Studio with balcony: \$450/week

Double/Twin Share: \$265/week



Terms & Conditions for all options: Prices are subject to provider changes / Minimum length of stay: 4 weeks for residential accommodation and 2 weeks for homestay / Payment is due at least 2 weeks prior to student arrival / Placement confirmation sent after receipt of full payment and confirmation of arrival flight details / Cancellation fees apply and are subject to provider policies