

IH Bondi

Accommodation 2018

 Accommodation Placement Fee
for all options: \$280


 Payment is due at least 2 weeks
prior to student arrival

 Airport Pick Up Service:
\$165

HOMESTAY

Living with a friendly Australian family is the most popular option. On average, homestay families live about 40 minutes by public transport from the school. Homestay accommodation includes breakfast & dinner from Monday to Friday, plus lunch on weekends.

Room type 2018


Standard Single:	 \$320/week
Twin Share: (students arriving together)	\$275/week
Standard Single: with Guardianship	\$400/week
Extra Night / Standard Single:	\$60/night




RESIDENTIAL

Bondi Junction Lodge / Quality Lodges


www.qualitylodges.com.au

 **Main features:** Newly renovated student residence in Bondi Junction with large kitchen, common areas, outdoor area, single rooms with shared bathrooms, twin share rooms and double rooms with en-suite; rooms all equipped with modern furniture, TV and kitchenette. WiFi up to 10GB per week. Laundry facilities (coin operated machines). Bed linen provided. Utility expenses included.

 **Type:** Student Residence

 **Location:** Bondi Junction (walking distance to IH Bondi)

Weekly rates 2018

Standard Single:	 \$315/week
Twin Share:	\$265/week
Twin Share Ensuite:	\$290/week
Double Ensuite:	\$450/week (for the room)

Security deposit (bond): One week rent + \$50 key deposit.

Terms & Conditions for all options: Prices are subject to provider changes / Minimum length of stay: 4 weeks for residential accommodation and 2 weeks for homestay / Payment is due at least 2 weeks prior to student arrival / Placement confirmation sent after receipt of full payment and confirmation of arrival flight details / Cancellation fees apply after confirmation of placement and are subject to provider policies



New



IH Bondi

Accommodation 2018




 Accommodation Placement Fee for all options: \$280

 Payment is due at least 2 weeks prior to student arrival

 Airport Pick Up Service: \$165

Hostel Plus / CozyStay

www.cozzystay.com.au

 **Main features:** Fully furnished buildings and houses with multiple rooms (from 4 to 25 single and twin share rooms), shared bathrooms, large kitchen and common areas. Free WiFi. Laundry facilities (coin operated machines). Bed linen provided. Utility expenses included.

 **Type:** Student Residence

 **Location:** Eastern Suburbs (Coogee)

Weekly rates 2018



Standard Single: \$385/week


Twin Share: \$240/week

Security deposit (bond): \$350 to be paid on the day of arrival.



Student Residence Premium / CozyStay

www.cozzystay.com.au

 **Main features:** High end, fully furnished houses and apartments with planned kitchen, timber floors and built in wardrobes. Laundry facilities (coin operated machines). Free high speed WiFi. Bed linen provided. Utility expenses included.

 **Type:** Shared Apartments and Houses

 **Location:** Eastern Suburbs (Kingsford / Randwick) and Lower North Shore (North)

 **Extras:** Compulsory Airport Transfer (\$165)

Weekly rates 2018



Standard Single: \$385/week

Twin Share or Double Room: \$240/week

Security deposit (bond): \$350 to be paid on the day of arrival.



Terms & Conditions for all options: Prices are subject to provider changes / Minimum length of stay: 4 weeks for residential accommodation and 2 weeks for homestay / Payment is due at least 2 weeks prior to student arrival / Placement confirmation sent after receipt of full payment and confirmation of arrival flight details / Cancellation fees apply after confirmation of placement and are subject to provider policies

www.ih Sydney.com.au

IH Bondi

Accommodation 2018


 Accommodation Placement Fee for all options: \$280


 Payment is due at least 2 weeks prior to student arrival

 Airport Pick Up Service: \$165

Be Accommodation

www.beaccommodation.com.au


 **Main features:** Recently renovated, modern student residence with single and double rooms (all with en-suite and a bar fridge), common areas with TV, shared kitchens and BBQ area with outdoor grill. Up to 12GB/month WiFi usage per month. Laundry facilities (coin operated machines). Utility expenses included. Please note that students have to bring their own bed linen.

 **Type:** Shared House

 **Location:** Maroubra (Sydney South)

Weekly rates 2018

Standard Single:  \$350/week


Double or Twin Share:  \$270/week
(for couples or friends)

Security deposit (bond): \$300 to be paid on the day of arrival.



Jack's Place

www.furnishedproperty.com.au

 **Main features:** Student residence with 40 single rooms, fully equipped kitchens, lounge areas with cable TV, separate male and female shared bathrooms, communal study room, roof-top terrace with outdoor furniture and BBQ. Free cable internet in every room. Free WiFi in common areas. Laundry facilities (coin operated machines). Bed linen provided.

 **Type:** Student Residence

 **Location:** Sydney City (Elizabeth Bay)

Weekly rates 2018

Standard Single:  \$400/week




Terms & Conditions for all options: Prices are subject to provider changes / Minimum length of stay: 4 weeks for residential accommodation and 2 weeks for homestay / Payment is due at least 2 weeks prior to student arrival / Placement confirmation sent after receipt of full payment and confirmation of arrival flight details / Cancellation fees apply after confirmation of placement and are subject to provider policies

IH Bondi

Accommodation 2018


 Accommodation Placement Fee
for all options: \$280

 Payment is due at least 2 weeks
prior to student arrival


 Airport Pick Up Service:
\$165

Yurong House

www.furnishedproperty.com.au

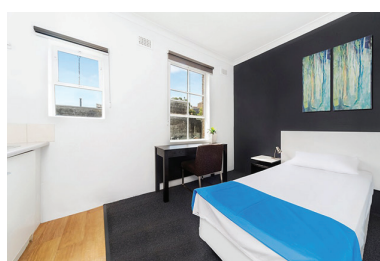
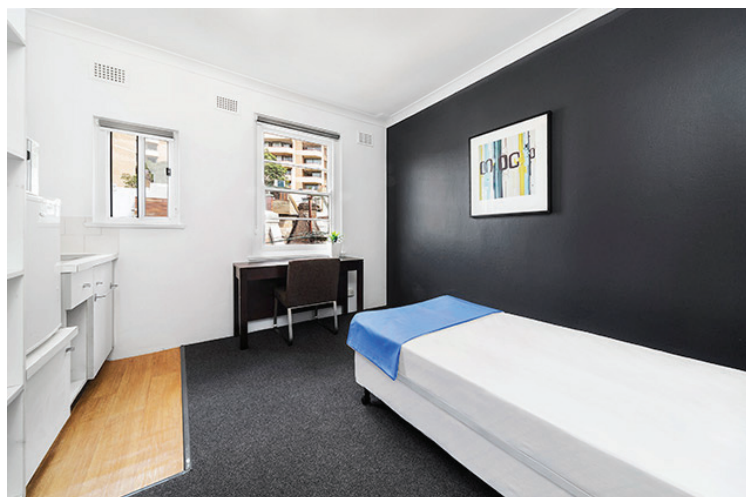
 **Main features:** Student residence with 30 beautiful, one bedroom studio units all equipped with modern furniture and kitchenette, shared common areas with TV, shared bathroom and a large shared kitchen. Up to 10GB/month WiFi usage per person. Laundry facilities (coin operated machines). Bed linen provided. Utility expenses included.

 **Type:** Student Residence

 **Location:** Sydney City (Darlinghurst)


Weekly rates 2018


Studio:  \$450/week



Chalmers Lodge

www.furnishedproperty.com.au

 **Main features:** Student residence with 19 studio units all equipped with modern furniture and kitchenette, shared common areas with TV, shared bathroom, large shared kitchen and communal courtyard. Laundry facilities (coin operated machines). Bed linen provided. Utility expenses included.

 **Type:** Student Residence

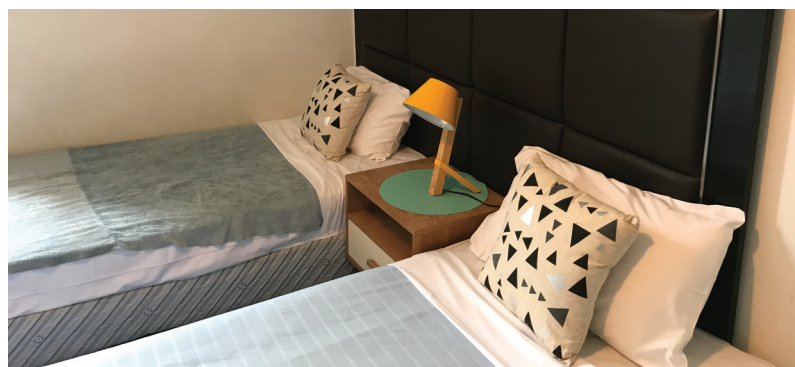
 **Location:** Sydney City (Surry Hills)

Weekly rates 2018

Studio:  \$430/week

Studio with balcony: \$450/week

Double/Twin Share: \$265/week



Terms & Conditions for all options: Prices are subject to provider changes / Minimum length of stay: 4 weeks for residential accommodation and 2 weeks for homestay / Payment is due at least 2 weeks prior to student arrival / Placement confirmation sent after receipt of full payment and confirmation of arrival flight details / Cancellation fees apply after confirmation of placement and are subject to provider policies